

# HPE Q2'19 US Smart Buy Express

## Your guide to this quarter's Best Sellers and Promotions

## Contents

### HPE Servers

- Page 2: HPE SBE DL380 Gen10 Servers
- Page 3: HPE SBE DL360, DL385 & DL325 Gen10 Servers
- Page 4: HPE SBE Towers & Gen9 Servers
- Page 5: HPE SBE Server Options & SPIF Guide
- Page 6: HPE Server Promotions

### HPE Storage

- Page 7: HPE Storage Solution Guide
- Page 8: HPE Storage Solution Guide



### Best Sellers

Look for the best seller logo (pictured above) in iQuote to find the same SKUs listed in this document. These are the most popular product offerings available from HPE. Utilize iQuote to create fast, accurate configurations to quote to your customer.  
**iQuote.hpe.com**



### Can't find something?

Medallion no touch pricing is available on almost all HPE products. Contact your distributor for a quote.



### Claim your rewards

Learn more:  
[hpeengageandgrow.com](https://partner.hpe.com/group/upp-na/engage-grow) or  
<https://partner.hpe.com/group/upp-na/engage-grow>

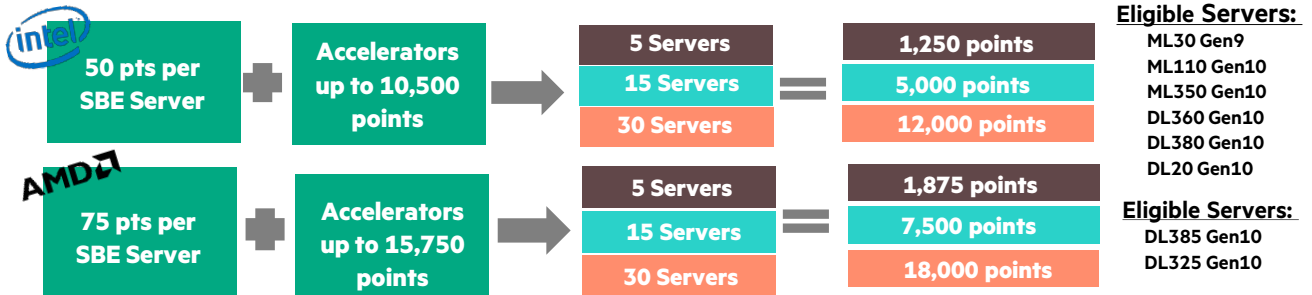
### HPE Promotions

See customer  
**Trade-in's, Cash Back and Rebate Programs**  
[hpe.com/us/ProLiantTradeIn](https://hpe.com/us/ProLiantTradeIn)



## Back & Improved for Q2'19: SPIF Accelerators on SBE Rack and Tower Servers!

Earn up to 75 points per Smart Buy Express Server plus accelerators up to 18,000 points



#### Eligible Servers:

- ML30 Gen9
- ML110 Gen10
- ML350 Gen10
- DL360 Gen10
- DL380 Gen10
- DL20 Gen10

#### Eligible Servers:

- DL385 Gen10
- DL325 Gen10

Visit Engage & Grow or contact your PBM for more details.

## HPE Q2'19 US Smart Buy Express

The right product, at the right price, **right now**



**Best Sellers**

Page 2

Why HPE Smart Buy Express Servers?



**Lowest instant price**



**Pre-configured best-selling servers**



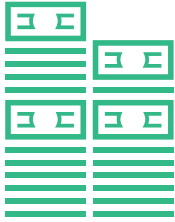
**In stock and ready to ship**

### HPE ProLiant DL380 Gen10 Servers

|  |  |  |  |   |
|--|--|--|--|---|
| <p><b>868709-B21</b></p> <p><b>\$1825*</b> 51% savings</p> <p>Intel Xeon 3106 (1)<br/>0 HDD (up to 8LFF)<br/>1x16GB DDR4<br/>1x500W PS</p> <p>50pt SPIF</p>                | <p><b>P06419-B21</b></p> <p><b>\$1810*</b> 50% savings</p> <p>Intel Xeon 3104 (1)<br/>0 HDD (up to 8LFF)<br/>1x16GB DDR4<br/>1x500W PS</p> <p>50pt SPIF</p>                | <p><b>826564-B21</b></p> <p><b>\$1725*</b> 54% savings</p> <p>Intel Xeon 3106 (1)<br/>0 HDD (up to 8SFF)<br/>1x16GB DDR4<br/>1x500W PS</p> <p>50pt SPIF</p>                | <p><b>P06420-B21</b></p> <p><b>\$2160*</b> 56% savings</p> <p>Intel Xeon 4110 (1)<br/>0 HDD (up to 8SFF)<br/>1x16GB DDR4<br/>1x500W PS<br/>P408i +SSB</p> <p>50pt SPIF</p> | <p><b>P06423-B21</b></p> <p><b>\$4500*</b> 51% savings</p> <p>Intel Xeon 6130 (1)<br/>0 HDD (up to 8SFF)<br/>2x32GB DDR4<br/>2x800W PS<br/>P408i +SSB</p> <p>50pt SPIF</p>  |
| <p><b>P05524-B21</b></p> <p><b>\$2295*</b> 56% savings</p> <p>Intel Xeon 4110 (1)<br/>0 HDD (up to 8SFF)<br/>1x16GB DDR4<br/>2x500W PS<br/>P408i +SSB</p> <p>50pt SPIF</p> | <p><b>875759-S01</b></p> <p><b>\$2080*</b> 55% savings</p> <p>Intel Xeon 4112 (1)<br/>0 HDD (up to 8SFF)<br/>1x16GB DDR4<br/>1x500W PS<br/>P408i +SSB</p> <p>50pt SPIF</p> | <p><b>P06421-B21</b></p> <p><b>\$2715*</b> 53% savings</p> <p>Intel Xeon 4114 (1)<br/>0 HDD (up to 8SFF)<br/>1x32GB DDR4<br/>1x800W PS<br/>P408i +SSB</p> <p>50pt SPIF</p> | <p><b>875761-S01</b></p> <p><b>\$2770*</b> 51% savings</p> <p>Intel Xeon 5115 (1)<br/>0 HDD (up to 8SFF)<br/>1x16GB DDR4<br/>1x500W PS<br/>P408i +SSB</p> <p>50pt SPIF</p> | <p><b>875766-S01</b></p> <p><b>\$3095*</b> 53% savings</p> <p>Intel Xeon 4114 (1)<br/>0 HDD (up to 24SFF)<br/>1x16GB DDR4<br/>1x800W PS<br/>P408i +SSB</p> <p>50pt SPIF</p> |
| <p><b>875763-S01</b></p> <p><b>\$3535*</b> 52% savings</p> <p>Intel Xeon 6126 (1)<br/>0 HDD (up to 8LFF)<br/>2x16GB DDR4<br/>2x500W PS<br/>P408i +SSB</p> <p>50pt SPIF</p> | <p><b>P06422-B21</b></p> <p><b>\$3955*</b> 52% savings</p> <p>Intel Xeon 5118 (1)<br/>0 HDD (up to 8SFF)<br/>2x32GB DDR4<br/>2x800W PS<br/>P408i +SSB</p> <p>50pt SPIF</p> | <p><b>875765-S01</b></p> <p><b>\$6770*</b> 45% savings</p> <p>Intel Xeon 6132 (1)<br/>0 HDD (up to 8SFF)<br/>1x16GB DDR4<br/>1x800W PS<br/>P408i +SSB</p> <p>50pt SPIF</p> | <p><b>Limited Time!</b></p> <p>Rebates up to <b>\$1,000!</b></p> <p><a href="#">Learn More</a></p> <p>Hewlett Packard Enterprise   Microsoft</p>                           |   |

Q2 Engage & Grow accelerators available on above SKUs, earn up to 18,000 pts!


\* Pricing shown is expected savings & is subject to change. Contact your distributor for actual pricing



# HPE Promotions

Learn about the latest  
**Trade-in's, Cash Backs, and Rebates**

[hpe.com/us/ProLiantTradeIn](http://hpe.com/us/ProLiantTradeIn)





**HPE Q2'19 US Smart Buy Express**

The right product, at the right price, **right now**

**HPE ProLiant DL360 Gen10 Servers**

|  |  |  |  |  |
|--|--|--|--|--|
| <p><b>P01880-B21</b></p> <p><b>\$1560*</b> 51% savings</p> <p>Intel Xeon 3104 (1)<br/>0 HDD (up to 4LFF)<br/>1x8GB DDR4<br/>1x500W PS</p> <p>50pt SPIF</p>                 | <p><b>867961-B21</b></p> <p><b>\$1705*</b> 52% savings</p> <p>Intel Xeon 3106 (1)<br/>0 HDD (up to 8SFF)<br/>1x16GB DDR4<br/>1x500W PS</p> <p>50pt SPIF</p>                | <p><b>P06453-B21</b></p> <p><b>\$2020*</b> 56% savings</p> <p>Intel Xeon 4110 (1)<br/>0 HDD (up to 8SFF)<br/>1x16GB DDR4<br/>1x500W PS<br/>P408i +SSB</p> <p>50pt SPIF</p> | <p><b>874459-S01</b></p> <p><b>\$1825*</b> 60% savings</p> <p>Intel Xeon 4112 (1)<br/>0 HDD (up to 8SFF)<br/>1x16GB DDR4<br/>1x500W PS<br/>P408i +SSB</p> <p>50pt SPIF</p> | <p><b>867962-B21</b></p> <p><b>\$2260*</b> 53% savings</p> <p>Intel Xeon 4114 (1)<br/>0 HDD (up to 8SFF)<br/>1x16GB DDR4<br/>1x500W PS<br/>P408i +SSB</p> <p>50pt SPIF</p> |
| <p><b>P06455-B21</b></p> <p><b>\$4460*</b> 49% savings</p> <p>Intel Xeon 6130 (1)<br/>0 HDD (up to 8SFF)<br/>2x32GB DDR4<br/>2x800W PS<br/>P408i +SSB</p> <p>50pt SPIF</p> | <p><b>P06454-B21</b></p> <p><b>\$3125*</b> 53% savings</p> <p>Intel Xeon 5118 (1)<br/>0 HDD (up to 8SFF)<br/>1x32GB DDR4<br/>2x800W PS<br/>P408i +SSB</p> <p>50pt SPIF</p> | <p><b>P05520-B21</b></p> <p><b>\$2155*</b> 56% savings</p> <p>Intel Xeon 4110 (1)<br/>0 HDD (up to 8SFF)<br/>1x16GB DDR4<br/>2x500W PS<br/>P408i +SSB</p> <p>50pt SPIF</p> | <p><b>Limited Time!</b></p> <p>Rebates up to <b>\$1,000!</b></p> <p><a href="#">Learn More</a></p> <p>Hewlett Packard Enterprise   Microsoft</p>                           |  |

**HPE ProLiant DL385 Gen10 Servers**

|  |  |  |  |   |
|--|--|--|--|---|
| <p><b>878712-B21</b></p> <p><b>\$1635*</b> 58% savings</p> <p>AMD EPYC 7251 (1)<br/>0 HDD (up to 8LFF)<br/>1x16GB DDR4<br/>1x500W PS</p> <p>75pt SPIF</p>                | <p><b>878714-B21</b></p> <p><b>\$1635*</b> 58% savings</p> <p>AMD EPYC 7251 (1)<br/>0 HDD (up to 8SFF)<br/>1x16GB DDR4<br/>1x500W PS</p> <p>75pt SPIF</p>                | <p><b>878718-B21</b></p> <p><b>\$2705*</b> 51% savings</p> <p>AMD EPYC 7301 (1)<br/>0 HDD (up to 8SFF)<br/>2x16GB DDR4<br/>1x500W PS<br/>P408i +SSB</p> <p>75pt SPIF</p> | <p><b>P09707-B21</b></p> <p><b>\$2840*</b> 52% savings</p> <p>AMD EPYC 7351 (1)<br/>0 HDD (up to 8SFF)<br/>2x16GB DDR4<br/>1x800W PS<br/>P408i +SSB</p> <p>75pt SPIF</p> | <p><b>878720-B21</b></p> <p><b>\$3340*</b> 58% savings</p> <p>AMD EPYC 7401 (1)<br/>0 HDD (up to 24SFF)<br/>2x16GB DDR4<br/>1x800W PS<br/>P408i +SSB</p> <p>75pt SPIF</p> |
| <p><b>878722-B21</b></p> <p><b>\$5605*</b> 61% savings</p> <p>AMD EPYC 7451 (2)<br/>0 HDD (up to 8SFF)<br/>1x32GB DDR4<br/>2x800W PS<br/>P408i +SSB</p> <p>75pt SPIF</p> | <p><b>P05887-B21</b></p> <p><b>\$1950*</b> 58% savings</p> <p>AMD EPYC 7251 (1)<br/>0 HDD (up to 8SFF)<br/>1x16GB DDR4<br/>2x500W PS<br/>P408i +SSB</p> <p>75pt SPIF</p> | <p><b>P00323-S01</b></p> <p><b>\$1760*</b> 46% savings</p> <p>AMD EPYC 7251 (1)<br/>0 HDD (up to 8SFF)<br/>1x16GB DDR4<br/>1x800W PS<br/>P408i +SSB</p> <p>75pt SPIF</p> | <p><b>P00326-S01</b></p> <p><b>\$4635*</b> 54% savings</p> <p>AMD EPYC 7451 (1)<br/>0 HDD (up to 8SFF)<br/>1x16GB DDR4<br/>1x800W PS<br/>P408i +SSB</p> <p>75pt SPIF</p> |   |

**HPE ProLiant DL325 Gen10 Servers**

|  |   |   |   |  |
|--|---|---|---|--|
| <p><b>P04646-B21</b></p> <p><b>\$1485*</b> 49% savings</p> <p>AMD EPYC 7251 (1)<br/>0 HDD (up to 4LFF)<br/>1x8GB DDR4<br/>1x500W PS</p> <p>75pt SPIF</p> | <p><b>P04647-B21</b></p> <p><b>\$1765*</b> 60% savings</p> <p>AMD EPYC 7351P (1)<br/>0 HDD (up to 8SFF)<br/>2x8GB DDR4<br/>1x500W PS</p> <p>75pt SPIF</p> | <p><b>P04651-B21</b></p> <p><b>\$1881*</b> 59% savings</p> <p>AMD EPYC 7351P (1)<br/>0 HDD (up to 8SFF)<br/>1x16GB DDR4<br/>1x500W PS<br/>P408i +SSB</p> <p>75pt SPIF</p> | <p><b>P04648-B21</b></p> <p><b>\$2051*</b> 64% savings</p> <p>AMD EPYC 7401P (1)<br/>0 HDD (up to 8SFF)<br/>2x16GB DDR4<br/>1x700W PS<br/>P408i +SSB</p> <p>75pt SPIF</p> | <p><b>P04649-B21</b></p> <p><b>\$1623*</b> 62% savings</p> <p>AMD EPYC 7251 (1)<br/>0 HDD (up to 8SFF)<br/>1x16GB DDR4<br/>2x500W PS<br/>P408i +SSB</p> <p>75pt SPIF</p> |
|--|---|---|---|--|

Q2 Engage & Grow accelerators available on above SKUs, earn up to 18,000 pts!

\* Pricing shown is expected savings & is subject to change. Contact your distributor for actual pricing



**HPE Q2'19 US Smart Buy Express**

The right product, at the right price, **right now**

**HPE ProLiant ML350 Gen10 Servers**

|  |   |  |   |   |
|--|---|--|---|---|
| <b>877619-001</b>  | <b>877620-001</b>   | <b>877621-001</b>  | <b>P04674-S01</b>   | <p><b>Limited Time!</b><br/>Rebates up to<br/><b>\$1,000!</b></p> <p style="background-color: #008080; color: white; text-align: center; padding: 5px;"><a href="#">Learn More</a></p> <p style="font-size: small; text-align: center;"> </p> |
| <p><b>\$1140*</b> 49%<br/>savings</p> <p>Intel Xeon 3104 (1)<br/>0 HDD (up to 4LFF)<br/>1x8GB DDR4<br/>1x500W PS</p> <p style="background-color: #cccccc; text-align: center;">50pt SPIF</p> | <p><b>\$1595*</b> 43%<br/>savings</p> <p>Intel Xeon 3106 (1)<br/>0 HDD (up to 4LFF)<br/>1x16GB DDR4<br/>1x500W PS</p> <p style="background-color: #cccccc; text-align: center;">50pt SPIF</p> | <p><b>\$2090*</b> 46%<br/>savings</p> <p>Intel Xeon 4110 (1)<br/>0 HDD (up to 8SFF)<br/>1x16GB DDR4<br/>1x800W PS<br/>P408i +SSB</p> <p style="background-color: #cccccc; text-align: center;">50pt SPIF</p> | <p><b>\$1730*</b> 58%<br/>savings</p> <p>Intel Xeon 4110 (1)<br/>0 HDD (up to 8SFF)<br/>1x16GB DDR4<br/>1x800W PS</p> <p style="background-color: #cccccc; text-align: center;">50pt SPIF</p> |   |

**HPE ProLiant ML110 Gen10 Servers**

|   |  |   |   |
|---|--|---|---|
| <b>P03684-S01</b>   | <b>P03685-S01</b>  | <b>P03686-S01</b>   | <b>P03687-S01</b>   |
| <p><b>\$745*</b> 54%<br/>savings</p> <p>Intel Xeon 3104 (1)<br/>0 HDD (up to 4LFF)<br/>1x8GB DDR4<br/>1x350W PS</p> <p style="background-color: #cccccc; text-align: center;">50pt SPIF</p> | <p><b>\$910*</b> 54%<br/>savings</p> <p>Intel Xeon 3106 (1)<br/>0 HDD (up to 4LFF)<br/>1x16GB DDR4<br/>1x550W PS</p> <p style="background-color: #cccccc; text-align: center;">50pt SPIF</p> | <p><b>\$1000*</b> 54%<br/>savings</p> <p>Intel Xeon 4108 (1)<br/>0 HDD (up to 4LFF)<br/>1x16GB DDR4<br/>1x550W PS</p> <p style="background-color: #cccccc; text-align: center;">50pt SPIF</p> | <p><b>\$1270*</b> 58%<br/>savings</p> <p>Intel Xeon 4110 (1)<br/>0 HDD (up to 8SFF)<br/>1x16GB DDR4<br/>1x800W PS</p> <p style="background-color: #cccccc; text-align: center;">50pt SPIF</p> |

**HPE ProLiant MicroServer Gen10 Servers**

|   |   |
|---|---|
| <b>873830-S01</b>   | <b>P04923-S01</b>   |
| <p><b>\$340*</b> 36%<br/>savings</p> <p>AMD Opteron X3216<br/>0 HDD (up to 4LFF)<br/>1x8GB DDR4<br/>1x200W PS</p> <p style="background-color: #cccccc; text-align: center;">50pt SPIF</p> | <p><b>\$410*</b> 44%<br/>savings</p> <p>AMD Opteron X3421<br/>0 HDD (up to 8SFF)<br/>1x8GB DDR4<br/>1x200W PS</p> <p style="background-color: #cccccc; text-align: center;">50pt SPIF</p> |

**HPE ProLiant ML30 Gen10 Servers**

|   |   |   |   |
|---|---|---|---|
| <b>P06781-S01</b>   | <b>P06785-S01</b>   | <b>P06789-S01</b>   | <b>P06793-S01</b>   |
| <p><b>\$691*</b> 36%<br/>savings</p> <p>Intel ZE-2124 (1)<br/>0 HDD (up to 4LFF)<br/>1x8GB DDR4<br/>1x350W PS</p> <p style="background-color: #cccccc; text-align: center;">50pt SPIF</p> | <p><b>\$902*</b> 36%<br/>savings</p> <p>Intel ZE-2124(1)<br/>0 HDD (up to 4LFF)<br/>1x16GB DDR4<br/>1x350W PS</p> <p style="background-color: #cccccc; text-align: center;">50pt SPIF</p> | <p><b>\$1110*</b> 41%<br/>savings</p> <p>Intel ZE-2134 (1)<br/>0 HDD (up to 4LFF)<br/>1x16GB DDR4<br/>1x500W PS</p> <p style="background-color: #cccccc; text-align: center;">50pt SPIF</p> | <p><b>\$1250*</b> 40%<br/>savings</p> <p>Intel EZ-2134 (1)<br/>0 HDD (up to 8SFF)<br/>1x16GB DDR4<br/>1x500W PS</p> <p style="background-color: #cccccc; text-align: center;">50pt SPIF</p> |

**HPE ProLiant DL20 Gen10 Servers**

|   |  |  |   |
|---|--|--|---|
| <b>P08335-B21</b>   | <b>P06477-B21</b>  | <b>P06478-B21</b>  | <b>P06479-B21</b>   |
| <p><b>\$620*</b> 48%<br/>savings</p> <p>Intel ZE-2124 (1)<br/>0 HDD (up to 2LFF)<br/>1x8GB DDR4<br/>1x290W PS</p> <p style="background-color: #cccccc; text-align: center;">50pt SPIF</p> | <p><b>\$776*</b> 48%<br/>savings</p> <p>Intel ZE-2124 (1)<br/>0 HDD (up to 2LFF)<br/>1x16GB DDR4<br/>1x290W PS</p> <p style="background-color: #cccccc; text-align: center;">50pt SPIF</p> | <p><b>\$1102*</b> 48%<br/>savings</p> <p>Intel E-2136 (1)<br/>0 HDD (up to 4SFF)<br/>1x16GB DDR4<br/>1x500W PS</p> <p style="background-color: #cccccc; text-align: center;">50pt SPIF</p> | <p><b>\$1082*</b> 48%<br/>savings</p> <p>Intel ZE-2134 (1)<br/>0 HDD (up to 4LFF)<br/>1x16GB DDR4<br/>1x500W PS</p> <p style="background-color: #cccccc; text-align: center;">50pt SPIF</p> |

Q2 Engage & Grow accelerators available on above SKUs, earn up to 18,000 pts!

\* Pricing shown is expected savings & is subject to change. Contact your distributor for actual pricing



**HPE Q2'19 US Smart Buy Express**

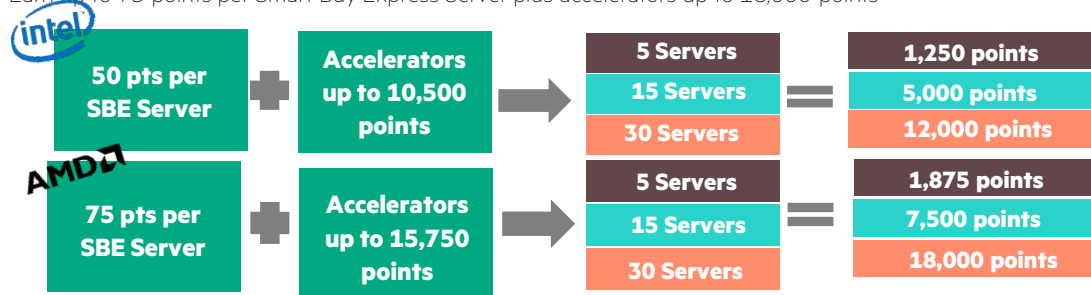
The right product, at the right price, **right now**

**HPE Smart Buy Express Server Options and Pointnext**

| SKU        | HPE Description                          | Type     | Savings % | SKU        | HPE Description                         | Type      | Savings % |
|------------|--|----------|-----------|------------|---|-----------|-----------|
| 765455-B21 | HPE 2TB SATA 7.2K SFF SC 512e DS HDD     | HDD      | 62%       | 817709-B21 | HPE Eth 10/25Gb 2p 631FLR-SFP28 Adptr   | Adapter   | 52%       |
| 801882-B21 | HPE 1TB SATA 7.2K LFF RW HDD             | HDD      | 48%       | 817718-B21 | HPE Eth 10/25Gb 2p 631SFP28 Adptr       | Adapter   | 50%       |
| 861681-B21 | HPE 2TB SATA 7.2K LFF LP DS HDD          | HDD      | 52%       | H1AH9E     | HPE 3Y FC 24x7 DL20 Gen9 SVC            | PointNext | 38%       |
| 861686-B21 | HPE 1TB SATA 7.2K LFF LP DS HDD          | HDD      | 62%       | H1AS6E     | HPE 3Y FC 24x7 ML30 Gen9 SVC            | PointNext | 38%       |
| 861691-B21 | HPE 1TB SATA 7.2K LFF SC DS HDD          | HDD      | 48%       | H1GB2E     | HPE 3Y FC 24x7 LTO 7 Autoloader SVC     | PointNext | 49%       |
| 872477-B21 | HPE 600GB SAS 10K SFF SC DS HDD          | HDD      | 52%       | H7JE5E     | HPE 3Y FC 24x7 MSA 2050 Storage SVC     | PointNext | 49%       |
| 872479-B21 | HPE 1.2TB SAS 10K SFF SC DS HDD          | HDD      | 48%       | H7JR2E     | HPE 3Y FC 24x7 MSA 2052 Storage SVC     | PointNext | 49%       |
| 872485-B21 | HPE 2TB SAS 7.2K LFF SC DS HDD           | HDD      | 48%       | H7LG3E     | HPE 3Y FC 24x7 Microserver Gen10 SVC    | PointNext | 38%       |
| 872489-B21 | HPE 2TB SATA 7.2K LFF SC DS HDD          | HDD      | 62%       | H8QFOE     | HPE 3Y FC 24x7 DL360 Gen10 SVC          | PointNext | 38%       |
| 872491-B21 | HPE 4TB SATA 7.2K LFF SC DS HDD          | HDD      | 60%       | H8QP7E     | HPE 3Y FC 24x7 DL38x Gen10 SVC          | PointNext | 38%       |
| 881457-B21 | HPE 2.4TB SAS 12G 10K SFF SC 512e DS HDD | HDD      | 66%       | H9CH9E     | HPE 3Y FC 24x7 ML110 Gen10 SVC          | PointNext | 38%       |
| 872475-B21 | HPE 300GB SAS 10K SFF SC DS HDD          | HDD      | 53%       | H9GF5E     | HPE 3Y FC 24x7 ML350 Gen10 SVC          | PointNext | 38%       |
| 870753-B21 | HPE 300GB SAS 15K SFF SC DS HDD          | HDD      | 64%       | H84G8E     | HPE 3Y FC 24x7 DL325 Gen10 SVC          | PointNext | 38%       |
| 870757-B21 | HPE 600GB SAS 15K SFF SC DS HDD          | HDD      | 56%       | HT4C7E     | HPE 3Y FC 24x7 MSA 1050 Storage SVC     | PointNext | 49%       |
| 805349-B21 | HPE 16GB 1Rx4 PC4-2400T-R Kit            | Memory   | 50%       | U3BF5E     | HPE 3Y FC 24x7 MSL 2024 SVC             | PointNext | 49%       |
| 805351-B21 | HPE 32GB 2Rx4 PC4-2400T-R Kit            | Memory   | 54%       | U4506E     | HPE Install DL3xx SVC                   | PointNext | 26%       |
| 815097-B21 | HPE 8GB 1Rx8 PC4-2666V-R Smart Kit       | Memory   | 48%       | H8QL8E     | HPE 5Y FC 24x7 DL360 Gen10 SVC          | PointNext | 38%       |
| 815098-B21 | HPE 16GB 1Rx4 PC4-2666V-R Smart Kit      | Memory   | 49%       | H84N6E     | HPE 5Y FC 24x7 DL325 Gen10 SVC          | PointNext | 38%       |
| 815100-B21 | HPE 32GB 2Rx4 PC4-2666V-R Smart Kit      | Memory   | 57%       | H8QV5E     | HPE 5Y FC 24x7 DL38x Gen10 SVC          | PointNext | 38%       |
| 819880-B21 | HPE 8GB 1Rx8 PC4-2133P-E-15 STND Kit     | Memory   | 48%       | UR508E     | HPE Install ProLiant MicroServer SVC    | PointNext | 26%       |
| 835955-B21 | HPE 16GB 2Rx8 PC4-2666V-R Smart Kit      | Memory   | 48%       | U7WZ5E     | HPE Install ML/DL Series 10 SVC         | PointNext | 26%       |
| 838081-B21 | HPE 16GB 1Rx4 PC4-2666V-R Smart Kit      | Memory   | 57%       | U6G21E     | HPE Install ML310e/ML110 SVC            | PointNext | 26%       |
| 838083-B21 | HPE 32GB 2Rx4 PC4-2666V-R Smart Kit      | Memory   | 48%       | U4522E     | HPE Install ML350(p) SVC                | PointNext | 26%       |
| 838089-B21 | HPE 16GB 2Rx8 PC4-2666V-R Smart Kit      | Memory   | 48%       | U4554E     | HPE Install DL38x(p) SVC                | PointNext | 26%       |
| 862974-B21 | HPE 8GB 1Rx8 PC4-2400T-E STND Kit        | Memory   | 49%       | U6H58E     | HPE Install DL560 SVC                   | PointNext | 26%       |
| 862976-B21 | HPE 16GB 2Rx8 PC4-2400T-E STND Kit       | Memory   | 57%       | HF385E     | HPE Trng Credits Servers/HybridIT SVC   | PointNext | 26%       |
| 876181-B21 | HPE 8GB 2Rx8 PC4-2666V-R Smart Kit       | Memory   | 53%       | HC219E     | HPE 3Y FC 24x7 DL385 Gen10 SVC          | PointNext | 38%       |
| 879505-B21 | HPE 8GB 1Rx8 PC4-2666V-E STND Kit        | Memory   | 48%       | U7EN6E     | HPE 1Y TS Service Credits 10 Per Yr SVC | PointNext | 26%       |
| 879507-B21 | HPE 16GB 2Rx8 PC4-2666V-E STND Kit       | Memory   | 48%       | U7EN7E     | HPE 3Y TS Service Credits 10 Per Yr SVC | PointNext | 26%       |
| E6U59ABE   | HPE iLO Adv Elec Lic 1yr Support         | Software | 48%       | U7EP4E     | HPE 1Y TS Service Credits 10 Per Yr SVC | PointNext | 26%       |
| 817721-B21 | HPE Eth 10Gb 2p 535FLR-T Adptr           | Adapter  | 62%       | U7EP5E     | HPE 3Y TS Service Credits 10 Per Yr SVC | PointNext | 26%       |
| 813661-B21 | HPE Eth 10Gb 2p 535T Adptr               | Adapter  | 59%       |            |   |           |           |

**Back & Improved for Q2'19: SPIF Accelerators on SBE Rack and Tower Servers!**

Earn up to 75 points per Smart Buy Express Server plus accelerators up to 18,000 points



**Eligible Servers:**

- ML30 Gen9
- ML110 Gen10
- ML350 Gen10
- DL360 Gen10
- DL380 Gen10
- DL20 Gen10

**Eligible Servers:**

- DL385 Gen10
- DL325 Gen10

## HPE Engage & Grow

**Shop and redeem! Product reward store**

The rewards store offers a variety of options to redeem your points. Choose from electronics, fashion, home goods, kid's gear, and travel, to name a few.

- 1** Sign-on via [Partner Ready Portal](#)
- 2** Learn & earn
- 3** Sell & earn
- 4** Redeem rewards
- 5** Keep active


Visit Engage & Grow or contact your PBM for more details.

**HPE Q2'19 US Smart Buy Express**  
The right product, at the right price, **right now**

**HPE Server Promotions**  
Page 6

**HPE Promotions - Limited Time Cash Back Offers**

**Up to \$1,000 per Server in Customer Rebates\***



**Offer #1:**


Accelerated Server Buy Back Program

---

**\$400 Per Server\***

replaced with any HPE Gen10 Server

+



**Offer #2:**

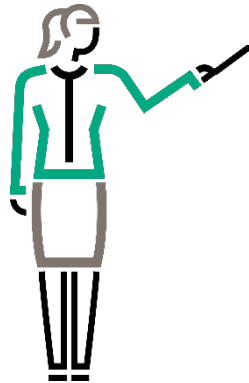
HPE Windows Server 2016 Bundle Rebate

---

**\$600 Per Server\***

for each purchase of Windows Server 2016 Datacenter ROK or \$250 for Standard ROK

(Key Applicable SKU's – See promotions page for details)



| SKU        | Product Description  |
|------------|--|
| P00487-B21 | Microsoft Windows Server (16 Core) <b>Standard</b>   Reseller Option Kit (ROK)   |
| P00488-B21 | Microsoft Windows Server (16-Core) <b>Datacenter</b>   Reseller Option Kit (ROK) |

\*HPE will cover shipping, handling, and recycling costs. Max rebate per product trade-in is \$40K. Valid in the US and Canada 2/1/19 through 4/31/19 while Rebates last.

**Complete details: please visit [hpe.com/us/ProLiantTradeIn](http://hpe.com/us/ProLiantTradeIn)**



## HPE Q2'19 US Smart Buy Express

The right product, at the right price, **right now**

### Why HPE Storage Solutions?



**Best Selling Solutions**



**Low Price**



**Simple Configurations**



**In stock and ready to ship**

### HPE MSA 2052 and MSA 2050 Storage Array

| Steps  | SKU      | Description  | Price   | Savings | E&G SPIF |
|--|----------|--|---------|---------|----------|
| <b>1) Buy an array.</b> Choose from a MSA 2052 or MSA 2050 SAN or SAS solution. MSA SAN models connect via 1/10GbE iSCSI and 8/16Gb Fibre Channel. MSA SAS models connect via 6/12Gb SAS.  | Q1J03A   | HPE MSA 2052 SAN SFF - Kit includes (1) SFF chassis, (2) AC power supplies, (2) SAN controllers, (2) 800GB MU SSDs (N9X96A) and (1) Advanced Data Services LTU (Q0H99A). | \$7,003 | 47%     | 1000     |
|  | Q1J31A   | HPE MSA 2052 SAS SFF - Kit includes (1) SFF chassis, (2) AC power supplies, (2) SAS controllers, (2) 800GB MU SSDs (N9X96A) and (2) Advanced Data Services LTU (Q0H99A). | \$6,946 | 47%     | 1000     |
|  | Q1J01A   | HPE MSA 2050 SAN DC SFF Storage - Kit includes (1) SFF chassis, (2) AC power supplies, (2) SAN controllers, no drives and no SFPs.                                       | \$5,646 | 47%     | 750      |
|  | Q1J29A   | HPE MSA 2050 SAS DC SFF Storage - Kit includes (1) SFF chassis, (2) AC power supplies, (2) SAS controllers, no drives and no SFPs.                                       | \$5,595 | 47%     | 750      |
| <b>2) Add SSDs.</b> The MSA 2052 ships with two 800GB SSDs for Caching, add at least two more 800GB SSD's for Tiering. The MSA 2050 ships with zero SSDs, add two SSDs for Caching or at least four for Tiering.   | N9X96A   | HPE MSA 800GB 12G SAS Mixed Use SFF  | \$2,152 | 47%     | 0        |
|  | N9X95A   | HPE MSA 400GB 12G SAS Mixed Use SFF  | \$1,132 | 47%     | 0        |
| <b>3) Add HDDs.</b> The MSA 2052 and MSA 2050 include zero HDDs. Customers can mix SSDs and HDDs in the same enclosure.  | J9F46A   | HPE MSA 600GB 12G SAS 10K 2.5in ENT HDD  | \$284   | 47%     | 0        |
|  | J9F48A   | HPE MSA 1.2TB 12G SAS 10K 2.5in ENT HDD  | \$454   | 47%     | 0        |
|  | J9F49A   | HPE MSA 1.8TB 12G SAS 10K 2.5in 512e HDD   | \$638   | 47%     | 0        |
|  | Q2R41A   | HPE MSA 2.4TB 12G SAS 10K 2.5in 512e HDD   | \$764   | 47%     | 0        |
| <b>4) Add software.</b> The MSA 2052 includes the Advanced Data Services Suite. Add the Advanced Data Services Suite to the MSA 2050 for Tiering.  | Q0H99AAE | HPE MSA Advanced Data Services Suite E-LTU with Performance Automated Tiering, 512 Snapshot and Remote Snap software.  | \$867   | 47%     | 0        |
| <b>5) Add SFPs.</b> MSA 2052 and MSA 2050 SAN Controllers do not ship with SFPs. Customers must select at least one of the above SFP options. Each SAN controller can be configured with 2 or 4 SFPs. For 10Gb iSCSI configurations, users can use DAC cables instead of SFPs. | C8R23B   | HPE MSA 8Gb SW FC SFP 4pk XCVR   | \$204   | 47%     | 0        |
|  | C8R24B   | HPE MSA 16Gb SW FC SFP 4pk XCVR  | \$816   | 47%     | 0        |
|  | C8S75B   | HPE MSA 1Gb RJ-45 iSCSI SFP 4pk XCVR   | \$255   | 47%     | 0        |
|  | C8R25B   | HPE MSA 10Gb SR iSCSI SFP 4pk XCVR   | \$765   | 47%     | 0        |
| <b>6) Add support.</b> The MSA 2052 and MSA 250 have optional Foundation Care packages.  | H7JE5E   | 3-year Foundation Care 24x7 support for MSA 2050 arrays.   | \$1,907 | 49%     | 0        |
|  | H7JR2E   | 3-year Foundation Care 24x7 MSA 2052 storage.  | \$2,533 | 49%     | 0        |
| <b>7) Check the QuickSpec for additional cabling, power cordsoftware, chassis and drive options.</b>   |          |  |         |         |          |

### HPE MSA 1050 Storage Array

| Steps   | SKU      | Description   | Price   | Savings | E&G SPIF |
|---|----------|---|---------|---------|----------|
| <b>1) Buy an array.</b> Choose from a MSA 1050 SAS, FC or iSCSI solution.   | Q2R21A   | HPE MSA 1050 12Gb SAS DC SFF Storage  | \$3,698 | 47%     | 500      |
|   | Q2R19A   | HPE MSA 1050 8Gb Fibre Channel Dual Controller SFF Storage  | \$3,825 | 47%     | 500      |
|   | Q2R23A   | HPE MSA 1050 1GbE iSCSI DC SFF Storage  | \$3,315 | 47%     | 500      |
|   | Q2R25A   | HPE MSA 1050 10GbE iSCSI DC SFF Storage   | \$4,335 | 47%     | 500      |
| <b>2) Add SSDs.</b> The MSA 1050 ships with zero SSDs, add two SSDs for Caching or at least four for Tiering.                                   | N9X96A   | HPE MSA 800GB 12G SAS Mixed Use SFF   | \$2,152 | 47%     | 0        |
|   | N9X95A   | HPE MSA 400GB 12G SAS Mixed Use SFF   | \$1,132 | 47%     | 0        |
| <b>3) Add HDDs.</b> The MSA 1050 includes zero HDDs. Customers can mix SSDs and HDDs in the same enclosure.                                     | J9F46A   | HPE MSA 600GB 12G SAS 10K 2.5in ENT HDD   | \$284   | 47%     | 0        |
|   | J9F48A   | HPE MSA 1.2TB 12G SAS 10K 2.5in ENT HDD   | \$454   | 47%     | 0        |
|   | J9F49A   | HPE MSA 1.8TB 12G SAS 10K 2.5in 512e HDD  | \$638   | 47%     | 0        |
|   | Q2R41A   | HPE MSA 2.4TB 12G SAS 10K 2.5in 512e HDD  | \$764   | 47%     | 0        |
| <b>4) Add software.</b> Add the Advanced Data Services Suite to the MSA 1050 for Tiering.   | Q0H99AAE | HPE MSA Advanced Data Services Suite E-LTU with Performance Automated Tiering, 512 Snapshot and Remote Snap software. | \$867   | 47%     | 0        |
| <b>5) SFPs are included.</b> The MSA 1050 iSCSI and FC models ship with two 2-port controllers and 4 SFPs. The SAS model does not require SFPs. |          |   |         |         |          |
| <b>6) Add support.</b> The MSA 1050 has an optional Foundation Care package.  | HT4C7E   | HPE 3y FC 24x7 MSA 1050 Storage SVC   | \$1,607 | 49%     | 0        |
| <b>7) Check the QuickSpec for additional cabling, power cord, software, chassis and drive options.</b>  |          |   |         |         |          |

\* Pricing shown is expected savings & is subject to change. Contact your distributor for actual pricing.





## HPE Q2'19 US Smart Buy Express

The right product, at the right price, **right now**

### Why HPE Storage Solutions?



**Best Selling Solutions**



**Low Price**



**Simple Configurations**



**In stock and ready to ship**

### HPE MSL 2024 and MSL 3040 Tape Library

| Steps   | SKU    | Description  | Price   | Savings | E&G SPIF |
|---|--------|--|---------|---------|----------|
| <b>1) Buy a tape library.</b> Choose the MSL 2024 tape library or the MSL 3040 tape library.                                      | AK379A | HPE MSL2024 0-Drive Tape Library - Includes: 2.5M PDU Power Cord, C13/C14, 10A (part number 142257-002), (1) RJ-45 Ethernet cable and rack-mount hardware. | \$2,040 | 47%     | 100      |
|   | Q6Q62B | HPE MSL3040 Scalable Base Module - Includes: 2.5M PDU Power Cord, rack-mount kit and power supply.   | \$3,570 | 47%     | 250      |
| <b>2) Add drives.</b> The base library ships with zero drives. Add at least one FC or SAS LTO or LTO-8 drive kit to each library. | N7P36A | HPE MSL LTO-7 FC Drive Upgrade Kit - Drive kit includes a tape drive and documentation   | \$3,251 | 47%     | 0        |
|   | N7P37A | HPE MSL LTO-7 SAS Drive Upgrade Kit - Drive kit includes a tape drive and documentation  | \$3,188 | 47%     | 0        |
|   | Q6Q67A | HPE MSL LTO-8 FC Drive Upgrade Kit - Drive kit includes a tape drive and documentation   | \$4,080 | 47%     | 0        |
|   | Q6Q68A | HPE MSL LTO-8 SAS Drive Upgrade Kit - Drive kit includes a tape drive and documentation  | \$3,825 | 47%     | 0        |
| <b>3) Add support.</b> The MSL libraries have optional Foundation Care packages.  | U3BF5E | HPE 3 year Foundation Care 24x7 MSL 2024 Service   | \$1,718 | 49%     | 0        |
|   | HH6W3E | HPE 3 year Foundation Care 24x7 MSL 3040 Service   | \$2,598 | 49%     | 0        |
| <b>4) Check the QuickSpec for cabling, software, media and support options.</b>   |        |  |         |         |          |
| <b>5) Add media per your backup or archiving strategy.</b>  |        |  |         |         |          |

### HPE StoreEasy 1660

| Steps  | SKU    | Description  | Price   | Savings | E&G SPIF |
|--|--------|--|---------|---------|----------|
| Buy a pre-configured 16TB StoreEasy 1660 NAS solution.   | Q2P73A | HPE StoreEasy 1660 16TB SAS Storage - Includes: 8 x 2TB 12G 7.2K RPM LFF SAS HDDs pre-installed and 4 open LFF slots in front and 2 SFF SSDs on M.2 card in rear PCIe slot with pre-installed OS | \$6,097 | 47%     | 750      |
| Check the QuickSpec for cabling, software, memory, controller, enclosure, drive and support options. . |        |  |         |         |          |

### HPE StoreFabric Fibre Channel Host Bus Adapters for ProLiant Server to Storage Attach

| Steps   | SKU    | Description                | Price   | Savings | E&G SPIF |
|---|--------|----------------------------|---------|---------|----------|
| Add one dual port or two single port HBA's to every server attaching to a Fibre Channel SAN. Ask the customer if they have standardized on QLogic of Emulex (Q or E). | P9D93A | HPE SN1100Q 16Gb 1p FC HBA | \$780   | 47%     | 0        |
|   | P9D94A | HPE SN1100Q 16Gb 2p FC HBA | \$1,239 | 47%     | 0        |
|   | Q0L13A | HPE SN1200E 16Gb 1p FC HBA | \$870   | 47%     | 50       |
|   | Q0L14A | HPE SN1200E 16Gb 2p FC HBA | \$1,380 | 47%     | 50       |
|   | P9M76A | HPE SN1600Q 32Gb 2P FC HBA | \$2,096 | 47%     | 0        |
|   | P9M75A | HPE SN1600Q 32Gb 1P FC HBA | \$1,352 | 47%     | 0        |
|   | Q0L12A | HPE SN1600E 32Gb 2P FC HBA | \$2,254 | 47%     | 50       |
|   | Q0L11A | HPE SN1600E 32Gb 1P FC HBA | \$1,433 | 47%     | 50       |
| The warranty for HPE-branded FC HBAs follows the server.  |        |                            |         |         |          |

\* Pricing shown is expected savings & is subject to change. Contact your distributor for actual pricing.